



DATE February 24, 2020

Bulletin#: TB2020-01

Technical Bulletin Regarding ASME Code (Individual PRV Elimination)

Applicable Models: iQ751, iQ1001, iQ1501

Description:

This bulletin is to communicate the rolling change due to the addition of Article 9 of the ASME Section IV code (ASME BPVC.IV-2019) about modular water heaters.

Under the previous version of the code, for the multi-engine iQ models, each engine could be interpreted as an individual water heater and thus could require the following (based on inspector/code official interpretation), per engine:

- A pressure relief valve (PRV)
- Stop valves on the outlet piping
- Bottom drain
- Thermometer and pressure gauge at the outlet
- Manifold is upgraded quality and ASME certified.

These components are no longer required for the units and thus will be removed from production starting with units shipped:

- With serial numbers after:
 - iQ751: 021220iQ75147
 - iQ1001: 021320iQ100142
 - iQ1501: 021420iQ150161
 - **iQ2001 & iQ3001 never contained these components

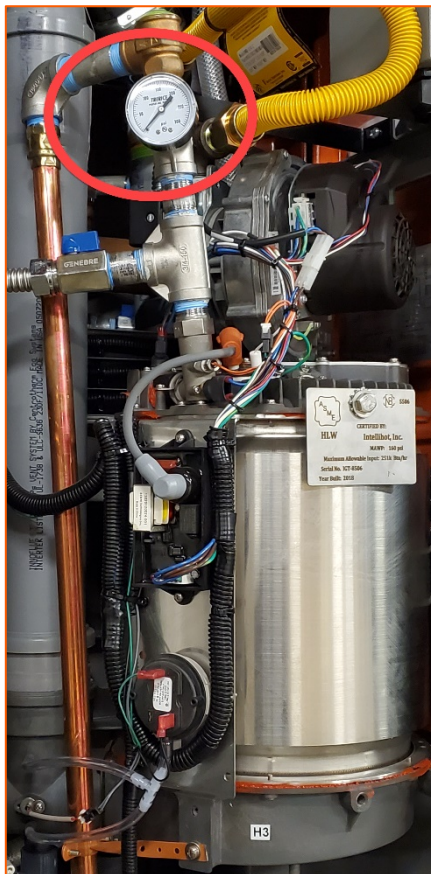
Benefits to the end-user for this change include, but not limited to:

- Fewer components/connections on the waterside to have potential leak issues.
- ASME certified as one unit, so only one ASME inspection required (save cost).
- Manifolds upgraded and certified (see Image below).

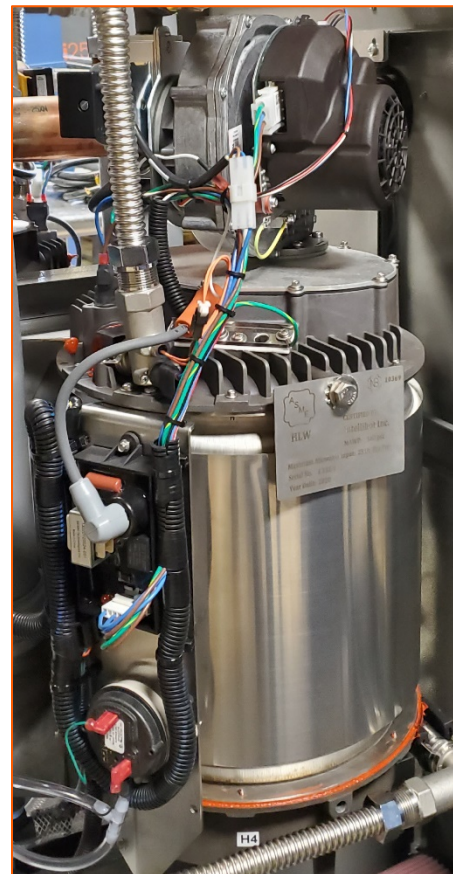


Upgraded Manifold

We do not recommend mixing the PRV unit and the new non-PRV single modular unit. This is due not only to aesthetics (confusion) but also potential different software versions as well. This could also cause more cost for boiler inspections for the original units with the PRV.



HEX with PRV (old)



HEX without PRV (new)



The crates will be marked with the following to distinguish the models as follows:

NOTICE

Singular Modular Water
Heater
(Certified to ASME)

NO PRV KITS ON
INDIVIDUAL HEX

If there are any questions or concerns, please contact the Intellihot technical support department, 1-877-835-1705 or support@intellihot.com